

FW23

Cat[®] Bags & Luggage

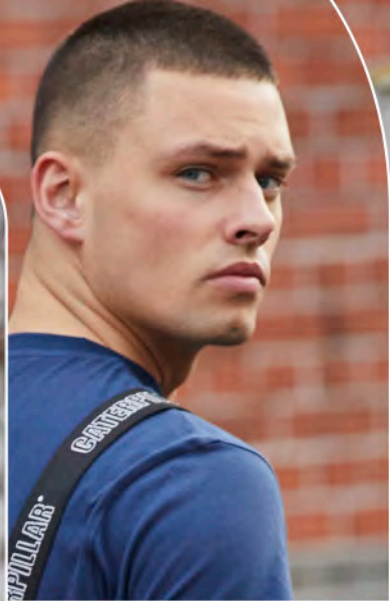
STRONG / TOUGH / RELIABLE

CAT

EUR













Bags & Luggage

FW23 Williams

STRONG / TOUGH / RELIABLE

64,99 €



84438 Backpack

Large Backpack

NEW STYLE

FEATURES

- Adjustable & padded airmesh shoulder straps
- Side pockets with elastic binding
- Spacious front pocket with roll top
- Large main compartment with zipper closure



Williams

Cat® Bags & Luggage FW23

DIMENSIONS

H x W x D	49 x 29 x 16 cm
Weight	0,648 kg
Volume	19 L

MATERIAL

100% polyester



01 Black



547 Harvest Gold



Bags & Luggage

FW23

Millennial Classic

STRONG / TOUGH / RELIABLE

69,99 €



84055 Backpack Extended

Barry

FEATURES

- Spacious main compartment with side compression straps
- Back zipper padded laptop or document pocket for quick access
- Air mesh padded back panel
- Padded air mesh shoulder straps with length adjustment



Millennial Classic

Cat® Bags & Luggage FW23

DIMENSIONS

H x W x D	47 x 33 x 33 cm
Weight	0,655 kg
Volume	31 L

MATERIAL

600D high density polyester (100%)



478 Black Heat Embossed



541 Astro Dust

NEW COLOR



147 Camouflage AOP

10

44,99 €



84056 Simple Backpack

Benji

FEATURES

- Organizer panel with detachable keychain
- Inside zipper pocket
- Mesh side pockets



Millennial Classic

Cat® Bags & Luggage FW23

DIMENSIONS

H x W x D	45 x 30 x 15 cm
Weight	0,37 kg
Volume	20 L

MATERIAL

600D high density polyester (100%)



504 Navy Heat Embossed



478 Black Heat Embossed



147 Camouflage AOP



541 Astro Dust

NEW COLOR



Millennial Classic
Benji



Mesh side pockets



29,99 €



84059 Mini Shoulder Bag

Rodney

FEATURES

- Padded mini-tablet compartment
- Flat zipper pocket on front panel
- Flat zipper pocket on back panel



Millennial Classic

Cat® Bags & Luggage FW23

DIMENSIONS

H x W x D	22 x 15 x 4 cm
Weight	0,2 kg
Volume	1,5 L

MATERIAL

600D high density polyester (100%)



504 Navy Heat Embossed



506 Machine Yellow Heat Embossed



478 Black Heat Embossed



147 Camouflage AOP



541 Astro Dust

NEW COLOR

29,99 €



84061 Leg Waist Bag

Steve

FEATURES

- Adjustable waist belt with quick-release buckle
- Front pocket with zipper closure
- Flat zipper pocket on back panel
- Removable strap that secures around the leg for added security



Millennial Classic

Cat® Bags & Luggage FW23

DIMENSIONS

H x W x D	31 x 34 x 4 cm
Weight	0,25 kg
Volume	2 L

MATERIAL

600D high density polyester (100%)



478 Black Heat Embossed

147 Camouflage AOP

79,99 €



84170 Cabin Backpack

Bobby

FEATURES

- Horizontal front zipper pocket with pen slots - flat slip pocket and key ring string
- Storage bucket compression panel
- Four side compression strap buckles
- Airmesh padded shoulder straps



Millennial Classic

Cat® Bags & Luggage FW23

DIMENSIONS

H x W x D	54,5 x 35 x 16 cm
Weight	1,05 kg
Volume	35 L

MATERIAL

600D high density polyester (100%)



478 Black Heat Embossed

15

34,99 €



84172 Ronald Utility

Ronald

FEATURES

- Organizer panel with detachable keychain
- Belt loop on back panel
- Detachable shoulder strap
- Two main compartments and a front pocket



NEW COLOR

Millennial Classic

Cat® Bags & Luggage FW23

DIMENSIONS

H x W x D	21 x 15 x 10 cm
Weight	0,4 kg
Volume	2 L

MATERIAL

600D high density polyester (100%)



478 Black Heat Embossed

NEW COLOR

79,99 €



84184 Backpack

Bennett

FEATURES

- Main compartment with padded laptop sleeve
- Expandable zipper function adding 8 cm to depth of main compartment
- Airmesh padded and adjustable shoulder straps
- Adjustable sternum strap



504 Navy Heat Embossed



478 Black Heat Embossed



147 Camouflage AOP

DIMENSIONS

H x W x D	45 x 30 x 14 cm
Weight	0,72 kg
Volume	30 L

MATERIAL

600D high density polyester (100%)

12,99 €



84351 Flat Sling Bag

Ross

FEATURES

- One main zipper compartment
- Adjustable shoulder strap



NEW COLOR

Millennial Classic

Cat® Bags & Luggage FW23

DIMENSIONS

H x W x D	19 x 13,5 x 8 cm
Weight	0,082 kg
Volume	1 L

MATERIAL

600D high density polyester (100%)



506 Machine Yellow
Heat Embossed



478 Black Heat
Embossed

NEW COLOR

12,99 €



84352 Wallet

Riley

FEATURES

- Holds up to 4 credit cards
- Compartment for bills
- RFID shield protection



Millennial Classic

Cat® Bags & Luggage FW23

DIMENSIONS

H x W x D	13 x 25 x 2 cm
Weight	0,06 kg
Volume	N/A

MATERIAL

600D high density polyester (100%)



478 Black Heat Embossed



147 Camouflage AOP



Bags & Luggage

FW23

The Project

STRONG / TOUGH / RELIABLE

24,99 €



83614 Shoulder Bag

Shoulder Bag

FEATURES

- Adjustable shoulder strap
- Tablet compartment
- Zipper pocket on front panel



The Project

Cat® Bags & Luggage FW23

DIMENSIONS

H x W x D	26,5 x 21 x 4,5 cm
Weight	0,24 kg
Volume	2 L

MATERIAL

600Dx600D(72T) POLY W/PVC*2



01 Black



533 Dazzling Blue



535 Bittersweet Red



542 Murky Green

21

NEW COLOR

34,99 €



84360 Kids backpack

Kids backpack

FEATURES

- Adjustable chest strap
- Padded tablet compartment
- Front zipper pocket
- Air mesh padded shoulder straps



The Project

Cat® Bags & Luggage FW23

DIMENSIONS

H x W x D	33,5 x 24 x 19,5 cm
Weight	0,35 kg
Volume	12 L

MATERIAL

600Dx600D(72T) POLY W/PVC*2



533 Dazzling Blue



535 Bittersweet Red



542 Murky Green

NEW COLOR

16,99 €



83615 Waist Bag

Waist Bag

FEATURES

- Main compartment with zipper closure
- Adjustable waist strap with quick-release buckle
- Back panel with hidden zipper pocket



NEW COLOR



01 Black

533 Dazzling Blue

535 Bittersweet Red

542 Murky Green

DIMENSIONS

H x W x D	11,5 x 33 x 6,5 cm
Weight	0,15 kg
Volume	1,8 L

MATERIAL

600Dx600D(72T) POLY W/PVC*2

NEW COLOR

11,99 €



84423 Wallet

Kids Wallet

NEW STYLE

FEATURES

- Small inside pocket
- Inside key attachment string
- Zipper closure



The Project

Cat® Bags & Luggage FW23



542 Murky Green

DIMENSIONS

H x W x D	19 x 9,6 x 2 cm
Weight	0,064 kg
Volume	0,3 L

MATERIAL

600Dx600D(72T) POLY W/PVC*2

24

NEW COLOR

11,99 €



84424 Pencil Case

Pencil Case

FEATURES

- Zipper closure
- One room main compartment



NEW STYLE

The Project

Cat® Bags & Luggage FW23

25

DIMENSIONS

H x W x D	11,5 x 23 x 5 cm
Weight	0,07 kg
Volume	1,3 L

MATERIAL

600Dx600D(72T) POLY W/PVC*2



01 Black

533 Dazzling Blue

535 Bittersweet Red

542 Murky Green

NEW COLOR



Bags & Luggage

FW23 Bizz. Tools

STRONG / TOUGH / RELIABLE

84024 Cabin Trolley

B. Holt Cabin Trolley

FEATURES

- Telescopic trolley handle
- Silent glide 8-wheel spinner system
- Slip pocket with RFID lining
- Protective EVA moulded front panel
- Front zipper pocket with laptop compartment & document slip pocket
- Grab handle on top and side
- Integrated TSA® Lock



159,99 €



Bizz. Tools

Cat® Bags & Luggage FW23



500 Two-Tone Black

DIMENSIONS

H x W x D	55 x 40 x 23 cm
Weight	3,4 kg
Volume	28 L

MATERIAL

ABS shell, EVA panel + 600D Polyester

99,99 €



84026 Business Backpack

B. Holt Business Backpack

FEATURES

- Front zipper pocket with EVA protection
- Secret zip passport pocket on back panel
- Large main compartment with large slip pocket & mesh zipper pocket
- Adjustable & padded shoulder straps



Bizz. Tools

Cat® Bags & Luggage FW23



500 Two-Tone Black

DIMENSIONS

H x W x D	45 x 32 x 16 cm
Weight	0,985 kg
Volume	22 L

MATERIAL

EVA panel + 600D Polyester

69,99 €



84027 Laptop Backpack

B. Holt Laptop Backpack

FEATURES

- Large main compartment with two small slip pockets
- Front EVA panel protection zipper pocket with inside RFID slip pocket & key ring attachment
- Adjustable & airmesh padded shoulder straps



Bizz. Tools

Cat® Bags & Luggage FW23

29

DIMENSIONS

H x W x D	44,5 x 30 x 17 cm
Weight	0,58 kg
Volume	19 L

MATERIAL

EVA panel + 600D Polyester



500 Two-Tone Black

39,99 €



84029 Shoulder Bag

B. Holt Utility Bag

FEATURES

- Front EVA protective front pocket
- Main compartment with organizer panel with slip pocket
- Inside key attachment string & pen slot slip pockets
- Removeable and adjustable shoulder string



DIMENSIONS

H x W x D	22,5 x 18 x 5 cm
Weight	0,23 kg
Volume	2 L

MATERIAL

EVA panel + 600D Polyester

500 Two-Tone Black

49,99 €



84349 Slim Briefcase

B. Holt Slim Briefcase

FEATURES

- Padded laptop compartment fits 15" laptop
- Front EVA protective pocket with inside large slip pocket with RFID lining
- Removeable and adjustable shoulder string
- Strap loop on back panel for connecting on top of a trolley handle



Bizz. Tools

Cat® Bags & Luggage FW23



500 Two-Tone Black

DIMENSIONS

H x W x D	25 x 37 x 15,5 cm
Weight	0,472 kg
Volume	10 L

MATERIAL

EVA panel + 600D Polyester

Bizz. Tools

B. Holt Slim Briefcase



Padded laptop compartment fits 15" laptop

31,99 €



84031 Protect Waist Bag

B. Holt Waist Bag

FEATURES

- Zipper main compartment with inside small zipper pocket
- Inside key attachment string
- Front EVA protective pocket with RFID shield
- Adjustable waistbelt



Bizz. Tools

Cat® Bags & Luggage FW23



500 Two-Tone Black

DIMENSIONS

H x W x D	12 x 28 x 6 cm
Weight	0,164 kg
Volume	1 L

MATERIAL

EVA panel + 600D Polyester

34,99 €



84163 EVA Hardcase Electronic organizer

B. Holt Organizer Case

FEATURES

- Fully unfoldable with all around zipper opening
- Middle divider with mesh slip pocket and pen loops
- Elastic loops for easy cord organization in middle divider
- Inside mesh zipper pocket



Bizz. Tools

Cat® Bags & Luggage FW23

34

DIMENSIONS

H x W x D	23 x 16 x 7,5 cm
Weight	0,345 kg
Volume	2 L

MATERIAL

EVA panel + 600D Polyester



500 Two-Tone Black



Bags & Luggage

FW23 Combat

STRONG / TOUGH / RELIABLE

39,99 €



84036 Shoulder bag

Namib Tablet Bag

FEATURES

- Padded tablet pocket
- Front pocket with flap and velcro closure
- Removable and adjustable shoulder strap
- Belt loop on back that can also be used to attach tablet bag on the front



Combat

Cat® Bags & Luggage FW23

DIMENSIONS

H x W x D	27 x 21 x 11 cm
Weight	0,34 kg
Volume	5 L

MATERIAL

1680D Polyester (100%)



501 Dark Anthracite

NEW COLOR

36

29,99 €



84037 Oversized Bum Bag

Sahara Waist Bag

FEATURES

- Main compartment with zipper closure
- Front zipper pocket
- Back zipper pocket
- Internal zipper pocket



NEW COLOR

Combat

Cat® Bags & Luggage FW23



501 Dark Anthracite

DIMENSIONS

H x W x D	15 x 29 x 11 cm
Weight	0,23 kg
Volume	3 L

MATERIAL

1680D Polyester (100%)

NEW COLOR

59,99 €



84161 55L Weekender

Antarctic Duffel M

FEATURES

- Spacious main compartment
- Front zipper pocket
- Adjustable shoulder strap
- Carry handle loops



Combat

Cat® Bags & Luggage FW23



501 Dark Anthracite

DIMENSIONS

H x W x D	34 x 61 x 37 cm
Weight	0,71 kg
Volume	55 L

MATERIAL

1680D Polyester (100%)

NEW COLOR

99,99 €



84175 Backpack advanced

Sonoran Backpack

FEATURES

- Front pocket with organizer panel of pen slots - flat slip pocket - card slots and key ring string
- Main back compartment with padded back slip pocket for a laptop
- Adjustable and airmesh padded shoulder straps
- Adjustable sternum strap



Combat

Cat® Bags & Luggage FW23

39

DIMENSIONS

H x W x D	49 x 17,5 x 33 cm
Weight	1,02 kg
Volume	33 L

MATERIAL

1680D Polyester (100%)

NEW COLOR

501 Dark Anthracite

44,99 €



84350 Light Backpack

Gobi Light Backpack

FEATURES

- Main zipper compartment with interior padded laptop slip pocket
- Flat side pockets
- Air mesh padded back panel and shoulder straps
- Shoulder strap webbing attachment loops



Combat

Cat® Bags & Luggage FW23

40

DIMENSIONS

H x W x D	43,5 x 29,5 x 24,5 cm
Weight	0,476 kg
Volume	21 L

MATERIAL

1680D Polyester (100%)

501 Dark Anthracite

NEW COLOR



Bags & Luggage

FW23 Signature

STRONG / TOUGH / RELIABLE

99,99 €

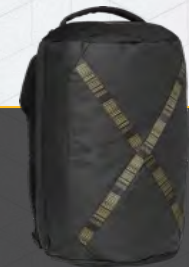


84046 Duffel backpack

The Sixty Duffel Bag

FEATURES

- Convertible bag that works as a backpack and a duffel carrier
- Spacious main compartment with flat inside zipper pocket for valuables
- Airmesh padded shoulder straps with length adjustment and middle carry pad that gives a useful grab-and-go feature
- Soft and flexible fabric



Signature

Cat® Bags & Luggage FW23

42

DIMENSIONS

H x W x D	54 x 30 x 30 cm
Weight	0,895 kg
Volume	39 L

MATERIAL

Polyurethane (PU) Fabric and Dobby Ripstop

01 Black

29,99 €



84050 Oversized Bum Bag

The Sixty Bum Bag XL

FEATURES

- Quick-release plastic buckle
- Front zipper pocket
- Back zipper pocket
- Main compartment with zipper closure and inside flat zipper pocket



01 Black

DIMENSIONS

H x W x D	11 x 37 x 14 cm
Weight	0,2 kg
Volume	3 L

MATERIAL

Polyurethane (PU) Fabric and Dobby Ripstop

Signature

Cat® Bags & Luggage FW23

43

19,99 €



84051 Waist Bag

The Sixty Waist Bag

FEATURES

- Main compartment with zipper closure
- Interior zipper pocket
- Adjustable strap with quick release buckle



01 Black

DIMENSIONS

H x W x D	7 x 30,5 x 7 cm
Weight	0,11 kg
Volume	0,9 L

MATERIAL

Polyurethane (PU) Fabric and Dobby Ripstop

84149 2 wheel Cabin Luggage

The Sixty Wheeled Duffel S

FEATURES

- Dual-telescopic trolley handle
- Compression straps in main compartment
- Mesh zipper pockets in top lid for easy organization
- Corner protection



134,99 €



Signature

Cat® Bags & Luggage FW23

DIMENSIONS

H x W x D	54 x 34 x 29 cm
Weight	2 kg
Volume	41 L

MATERIAL

300D Ripstop with coated PVC



01 Black

45

19,99 €



84166 Small Shoulder Bag

The Sixty City Bag

FEATURES

- Front DNA cross with branded webbing
- Front vertical zipper pocket
- Adjustable shoulder strap
- Cool look-a-like side panel design



Signature

Cat® Bags & Luggage FW23

DIMENSIONS

H x W x D	16 x 12,5 x 5,5 cm
Weight	0,14 kg
Volume	1 L

MATERIAL

Polyurethane (PU) Fabric and Dobby Ripstop



01 Black

11,99 €



84422 Wallet

The Sixty Outdoor Wallet

FEATURES

- Keychain with small compartment
- One main zipper compartment



NEW STYLE



01 Black

DIMENSIONS

H x W x D	17 x 9,5 x 1,5 cm
Weight	0,06 kg
Volume	0,3 L

MATERIAL

Polyurethane (PU) Fabric and Dobby Ripstop

Signature

Cat® Bags & Luggage FW23

47



Bags & Luggage

FW23

Urban Mountaineer

STRONG / TOUGH / RELIABLE

34,99 €



83367 Shoulder Bag

Kilimanjaro

FEATURES

- Padded tablet compartment
- Front vertical zipper pocket
- Front webbing with reflective element
- Flap pocket with hypalon patch on front for bike light attachment



NEW COLOR

Urban Mountaineer

Cat® Bags & Luggage FW23

DIMENSIONS

H x W x D	27 x 21 x 7,5 cm
Weight	0,22 kg
Volume	4 L

MATERIAL

Lightweight Polyester Diamond Ripstop



01 Black



201 Dark Sand



543 Cedar Green

NEW COLOR

69,99 €



84076 Backpack

Matterhorn

FEATURES

- Large main compartment
- Reflective webbing for added security
- Adjustable chest strap
- Front bungee cord for extra storage



Urban Mountaineer

Cat® Bags & Luggage FW23

49

DIMENSIONS

H x W x D	46,5 x 32 x 30 cm
Weight	0,585 kg
Volume	29 L

MATERIAL

Lightweight Diamond Ripstop Polyester



01 Black



201 Dark Sand



543 Cedar Green

NEW COLOR

49,99 €



84077 Light Hiking Backpack

Benali

FEATURES

- One room main compartment
- Adjustable reflective webbing at front for extra storage of for example a jacket
- Side mesh pockets
- Hypalon patch on front for bike light attachment



NEW COLOR

Urban Mountaineer

Cat® Bags & Luggage FW23

DIMENSIONS

H x W x D	45 x 30 x 23 cm
Weight	0,38 kg
Volume	23 L

MATERIAL

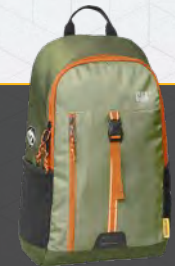
Lightweight Diamond Ripstop Polyester



01 Black



201 Dark Sand



543 Cedar Green

NEW COLOR

84361 Toiletry Bag

Makula

FEATURES

- One main zipper compartment and two flat splash proof zipper pockets
- Hanging hook
- Front webbing with reflective element
- Hypalon patch on front
- Main flap with Velcro closure



24,99 €

CAT

Urban Mountaineer

Cat® Bags & Luggage FW23

DIMENSIONS

H x W x D	19 x 22 x 11 cm
Weight	0,146 kg
Volume	3 L

MATERIAL

Lightweight Diamond Ripstop Polyester



01 Black

52

69,99 €



84425 Backpack

La Meije

FEATURES

- Reflective Cat logo for added security
- Adjustable & padded airmesh shoulder straps
- Fabric side pockets for water bottle
- Easy access U-shape zipper access to large main compartment



NEW STYLE

Urban Mountaineer

Cat® Bags & Luggage FW23

DIMENSIONS

H x W x D	53 x 23 x 34 cm
Weight	0,76 kg
Volume	30,5 L

MATERIAL

Lightweight Diamond Ripstop Polyester



01 Black



201 Dark Sand



543 Cedar Green

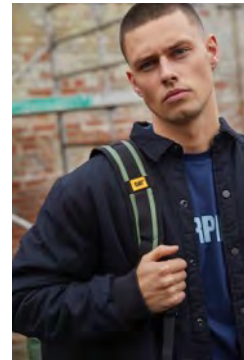
NEW COLOR

NEW STYLE

Urban Mountaineer
La Meije



Easy access U-shape zipper
access to large main compartment





Bags & Luggage

FW23

City Adventure

STRONG / TOUGH / RELIABLE

49,99 €



84353 Backpack

Backpack

FEATURES

- Main compartment with padded laptop slip pocket
- Side mesh pockets on both sides
- Padded shoulder straps and back panel
- Reflective logo print



City Adventure

Cat® Bags & Luggage FW23

56

DIMENSIONS

H x W x D	45 x 31 x 23 cm
Weight	0,42 kg
Volume	23 L

MATERIAL

600D RPET



01 Black



544 Calactic Blue



351 Army Green

NEW COLOR

34,99 €



84355 Sling Bag

Sling Bag

FEATURES

- Main compartment with inside slip pocket
- Airmesh padded shoulder pad with adjustable strap length
- Reflective print logo
- Carry handle on top and sides



City Adventure

Cat® Bags & Luggage FW23

DIMENSIONS

H x W x D	30,5 x 18 x 14,5 cm
Weight	0,218 kg
Volume	6 L

MATERIAL

600D RPET



01 Black



544 Calactic Blue



351 Army Green

NEW COLOR

24,99 €



84426 Waist Bag

Large Bum Bag

NEW STYLE



FEATURES

- Front pocket with zipper closure
- Adjustable hip belt or shoulder carry belt
- Back panel with zipper pocket
- Inside slip pocket in main compartment

City Adventure

Cat® Bags & Luggage FW23



01 Black

544 Calactic Blue

351 Army Green

DIMENSIONS

H x W x D	18 x 41 x 11 cm
Weight	0,21 kg
Volume	3,5 L

MATERIAL

600D RPET

58



Adjustable hip belt or shoulder carry belt

NEW STYLE

City Adventure

Large Bum Bag





Bags & Luggage

FW23 Accessories

STRONG / TOUGH / RELIABLE

39,99 €



84365 Hard Case Wallet

Hard Case Wallet

FEATURES

- Push-out card slot for multiple card storage
- Compartment for bills
- Snap bottom closure



Accessories

Cat® Bags & Luggage FW23

61

DIMENSIONS

H x W x D	10 x 7 x 2,5 cm
Weight	0,118 kg
Volume	0,175 L

MATERIAL

PU Vegan



01 Black



529 Cognac

39,99 €

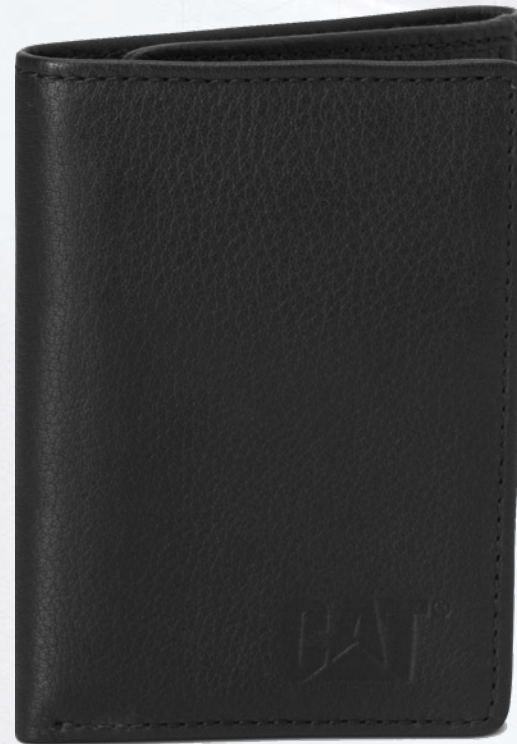


84413 Wallet

Kenya

FEATURES

- Mesh compartment
- Three credit card compartments
- Hidden pocket in cash compartment
- RFID shield protection



Accessories

Cat® Bags & Luggage FW23

DIMENSIONS

H x W x D	10,5 x 8 x 2 cm
Weight	0,06 kg
Volume	0,17 L

MATERIAL

PU Vegan



01 Black



529 Cognac

39,99 €



84414 Wallet

Ethiopian

FEATURES

- Wallet with money clip
- Easy access card slot on outside
- Slim profile
- RFID shield protection



Accessories

Cat® Bags & Luggage FW23

DIMENSIONS

H x W x D	10 x 12 x 2,5 cm
Weight	0,08 kg
Volume	0,3 L

MATERIAL

PU Vegan



01 Black



529 Cognac

63



Bags & Luggage

FW23

Cat Cargo

STRONG / TOUGH / RELIABLE

139,99 €

159,99 €

184,99 €



Hardside ABS luggage with expander on 24 + 28"

Industrial Plate

20"/24"/28"

FEATURES

- Silent-glide 8-wheel spinner system
- Fixed combination TSA® Lock
- Expander function on 24" and 28" for 20% extra capacity
- Zipper mesh pocket inside main compartment



20" SKU no.: 83552



24" SKU no.: 83685



28" SKU no.: 83686

MATERIAL

100% ABS

DIMENSIONS	20" SKU no.: 83552	24" SKU no.: 83685	28" SKU no.: 83686
H x W x D	54 x 37,5 x 23,5 cm	65 x 44 x 27 cm	74,5 x 51 x 31 cm
Weight	2,7 kg	3,57 kg	4,53 kg
Volume	35 L	59 L	92 L



01 Black



217 Sulphur



159,99 €

219,99 €

249,99 €



Hardside Virgin PC Trolley

Stealth

20"/24"/28"

FEATURES

- Expander function on 24" and 28"
- Elastic compression straps
- Silent-glide Hinamoto double-wheels
- Lightweight, scratch resistant and durable



20" SKU no.: 83796



24" SKU no.: 83797



28" SKU no.: 83798

MATERIAL

100% Covestro Polycarbonate (PC)

DIMENSIONS	20" SKU no.: 83796	24" SKU no.: 83797	28" SKU no.: 83798
H x W x D	55 x 39,5 x 22,5 cm	64 x 44 x 28 cm	75 x 49 x 34 cm
Weight	2,9 kg	3,8 kg	4,8 kg
Volume	32 L	65 L	88 L



01 Black



Cat-D 2.0

20"/24"

129,99 €

154,99 €

FEATURES

- 8-wheel easy glide spinner system
- Telescopic trolley handle
- Fixed combination TSA® Lock
- Inside zipper divider with flat mesh zipper pocket



20" SKU no.: **84038**



24" SKU no.: **84039**



MATERIAL

70% ABS + 30% PC with PC FILM Shiny smooth

DIMENSIONS	20" SKU no.: 84038	24" SKU no.: 84039
H x W x D	5 x 37,5 x 22 cm	65 x 45 x 26 cm
Weight	2,83 kg	4,03 kg
Volume	34 L	74 L



95 Brushed Silver



99,99 €



Luggage

20"

FEATURES

- Silent glide 8-wheel spinner system



20" SKU no.: 84380

MATERIAL

100% PP

DIMENSIONS 20" SKU no.: 84380

H x W x D 57 x 39 x 22,5 cm

Weight 2,7 kg

Volume 43 L



01 Black

Cat Cargo

Cat® Bags & Luggage FW23

68

www.cat.com – www.caterpillar.com ©2022 Caterpillar. All Rights Reserved. CAT, CATERPILLAR, their respective logos, "Caterpillar Yellow", the "Power Edge" and Cat "Modern Hex" trade dress as well as corporate and product identity used herein, are trademarks of Caterpillar and may not be used without permission. GROWN UP Licenses Ltd. is a global licensee for bags and accessories of Caterpillar Inc.



SmartLife s.r.o.
Matzenauerova 2222/4
616 00 Brno

Petr Janík
+420 602 504 053
petr.janik@smartlife.cz

GROWN UP LICENSES ApS // Balticgade 10B · DK-8000 Aarhus C · Denmark

STRONG / TOUGH / RELIABLE



Bags & Luggage

