

  
**RECENT TOYS**

*World's most fascinating  
brainteaser puzzles, games and gifts*

**DISTRIBUTOR'S CATALOGUE  
2023**





**Recent Toys is a developer and manufacturer and has dedicated itself to create World's Most Fascinating Brainteaser Puzzles!**

**We work together with many renowned inventors in the industry and always strive for the utmost uniqueness, durability and friendly usability in our products. We have a passion for what we do and we can assure you that all items we have in this catalogue are uniquely designed for you and your customer.**

**Furthermore, we are committed to reducing the amount of plastic waste with plastic-free and low-waste designs and solutions. We aim to be a more sustainable business and plan to do everything in our power to reduce our footprint.**



The Recent Toys collection is an assortment of brainteaser puzzles and other related puzzles. We work closely together with renowned inventors in the industry and this collection consists of items from inventors such as Andrea Mainini, George Miller, Gabriel Songel, Vladimir Krasnoukhov, Guido Lap, Oskar van Deventer and many more. Recent Toys itself has a team that is also focused on creating and developing new puzzles. This way, we will always have the most fun, unique, challenging and inspiring items available for you!



# Recent Toys Collection



## BRAIN DICE

### Finally a puzzle where you can win every roll!

Place all six dice randomly in their molded chambers, then turn the knobs until the combinations on all sides equals the number of pips on the dice.

Don't think it's worth the gamble? Well, it's not as dicey as you think. With literally thousands of numeric combinations, there is always a solution... all it takes it just one more roll.



Age <b>9+</b>	Mastercartons <b>24 pieces</b> (inners of 6)	Barcode <b>8717278850405</b>
Player <b>1</b>	Suggested Price <b>459 Kč / 18,99 €</b>	Item code <b>#RT31</b>

## ICOSOKU

### Matching dots to numbers

Place the number tiles in random slots, then match the number of dots on all five intersecting triangles to each tile. All done, right? Not so fast. Now you can build your next challenge – simply swap a few number tiles and the game continues! Remember: a solution is always just around the next twist. With the perfect geometry of an icosahedron, Icosoku can be solved every single try!



Age <b>9+</b>	Mastercartons <b>24 pieces</b> (inners of 6)	Barcode <b>8717278850252</b>
Player <b>1</b>	Suggested Price <b>459 Kč / 18,99 €</b>	Item code <b>#RT22</b>

**UNLIMITED  
POSSIBILITIES**



## BRAINSTRING ADVANCED

### If you like Brainstring Original, you'll love Brainstring Advanced!

With eight sides and four color groups, Brainstring Advanced is a playground at your fingertips – slip the strings through the pathways to create mighty knots, untangle the knots, slide the ergonomic nubs around without making a mess, or enjoy weaving your own designs. There are unlimited possible configurations, so brainstorm your way through the Brainstring Advanced!



Age  
**14+**

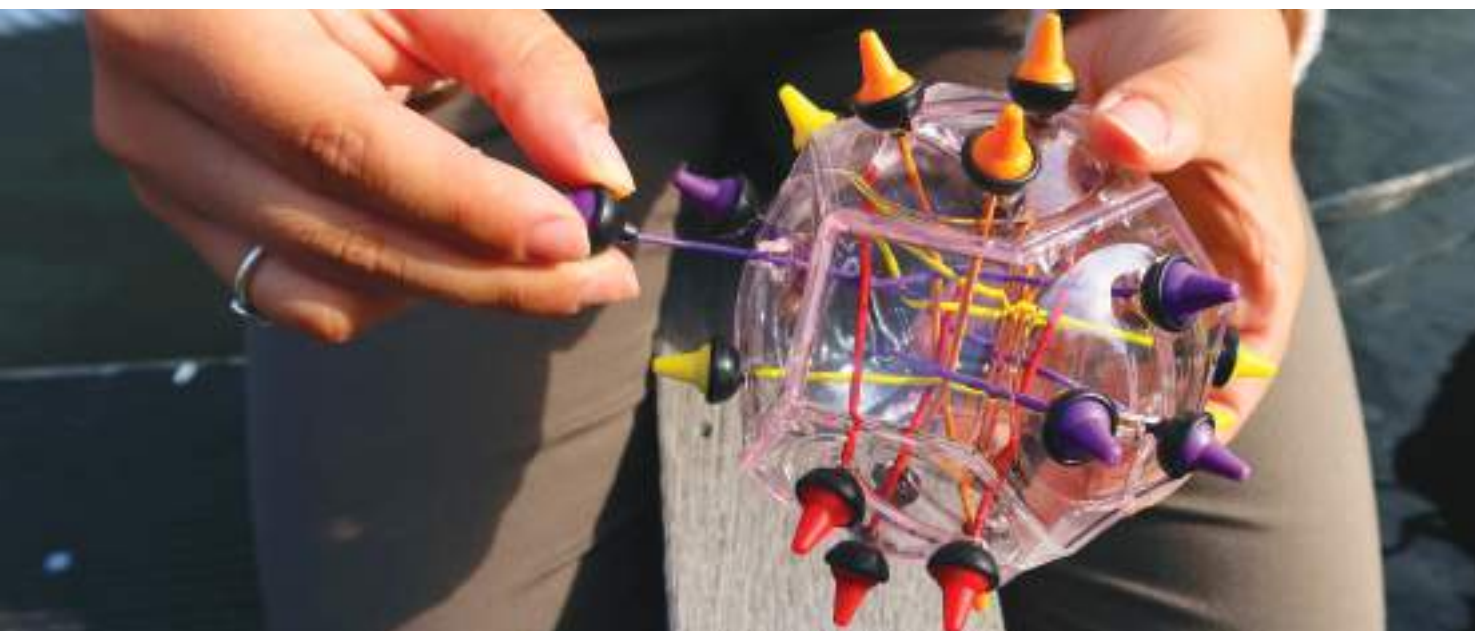
Mastercartons  
**24 pieces**  
(inners of 6)

Barcode  
**8717278850221**

Player  
**1**

Suggested Price  
**459 Kč / 18,99 €**

Item code  
**#RT19**



# DYNACUBE

## For your inner fidgeter!

Long queues, waiting rooms...the clock ticks and tocks forever.

Good thing you brought your Dynacube!

Endless variations for busy fingers. Once picked up, you will never want to put it down. The first geometrical shapes are easy... but what about the other 100?

Age  
**14+**

Display of 12 pieces,  
3 styles • Items not  
available individually

Barcode  
**8717278850542**

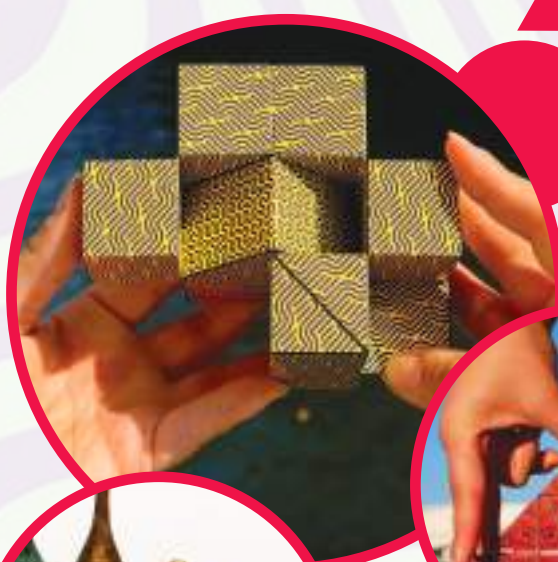
Player  
**1**

Suggested Price  
**299 Kč / 11,99 €**

Item code  
**#RT28**



**100+  
SHAPES!**





## ***“ARE YOU SERIES” PUZZLES***

### **Discover what you are!**

The “Are You Series” offers a selection of the best classic puzzles in metal and wood. Take them apart and put them back together. Are you able to do that? Are you...?



Age  
**14+**

Display of 27 pieces,  
9 styles • Items not  
available individually

Barcode  
**8717278851259**

Player  
**1**

Suggested Price  
**124,90 Kč/4,99 €**

Item code  
**#RT5125**



# *Are you savvy?*



## **9 STYLES!**

## MIKE HARMAN'S MATCH & PAIR

### Based on the art of Mike Harman

Mike Harman is a truly original English artist born in 'the garden of England' Kent. He is also the creator of the Colour Buddy Concept and the 'Imagination Pictures'. His immensely unique artwork was the base for two new games: Match and Pair!

#### Pair!

Test your memory to the max!

This seemingly simple game goes one step further. Merely eight identical pairs of square tiles to match must be child's play...right?

#### Match!

Match requires a sharp mind and quick reflexes.

With two identical sets of eighteen playing cards, you'll have plenty of chances to find matches. Better think fast, though – with Match, all players search for matches at the same time.



Age  
**14+**

Mastercartons  
**24 pieces**  
(innern of 6)

Player  
**2-4**

Suggested Price  
**249 Kč / 9,99 €**

Mike Harman Pair

Item code

**#RT5112**

Barcode

**8717278851129**

Mike Harman Match

Item code

**#RT5111**

Barcode

**8717278851112**

## THE BIG FIVE CARDS & DICE

The Big Five is a selection of the best classic card and dice games. We studied hundreds of existing games and made this selection based on the following criteria:

- Great play value
- Simple and clear instructions
- Dynamic and quick play
- Ideal for friends and family

Age <b>14+</b>	8 pieces display Items not available individually
Player <b>2-6</b>	Suggested Price <b>249 Kč / 9,99 €</b>

### The 5 Classic Dice Games

Item code <b>#RT5129</b>	Barcode <b>8717278851143</b>
-----------------------------	---------------------------------

### The 5 Classic Card Games

Item code <b>#RT5128</b>	Barcode <b>8717278851136</b>
-----------------------------	---------------------------------





## THE LOCKED WINE PUZZLE

### Think before you drink!

The Locked Wine Puzzle makes you one promise: once set up, it will be a real challenge to release the bottle and quench your thirst. Hours of puzzling fun guaranteed...and a treat once solved!



Age  
**14+**

Mastercartons  
**8 pieces**  
(inners of 4)

Barcode  
**8717278851150**

Player  
**1**

Suggested Price  
**399 Kč / 15,99 €**

Item code  
**#RT5115**

**1** START  
HERE



**2** GET  
THERE





# Meffert 's Collection

Uwe Meffert started designing rotational puzzles in 1970 with the invention of the Pyraminx. Since then, he has created over 100 styles of twisty puzzles that are exclusively distributed by Recent Toys, worldwide. The Meffert's brand stands for high quality, innovation, and for having the "World's largest range of twisty puzzles". Meffert is an icon in the industry and his products are a must-have.

# New packaging



Recent Toys is proud to announce that we are developing and implementing packaging for Meffert's Collection that is free from single-use plastic as a part of our mission toward sustainability. Over the course of the next twelve months, we will replace our current packaging for Meffert's Collection with new plastic-free versions.

---

**As of March 2023, the first batch of products will have new plastic-free open packaging.**

---

**Look for the icon to see which items will have the new packaging from March.**



---

**Further rollouts for this collection will happen as the year goes on.**

---

**The new packaging will be the same size and will fit in the old displays.**

---

**If you have any questions regarding the new packaging, please contact us.**



## GEAR BALL



### Puzzle of the Century

We're not shy. Growing in popularity by the year, the Gear Ball is still our top seller around the globe. Welcome to a remarkable work of 'puzzle art': a combination of intriguing construction, enjoyable play, and unbelievably smooth movements. Gear up!

Age <b>7+</b>	Mastercartons <b>24 pieces</b> (inners of 6)	Barcode <b>8717278850313</b>
Player <b>1</b>	Suggested Price <b>599 Kč / 23,99 €</b>	Item code <b>#M5031</b>

**PUZZLE  
OF  
THE  
CENTURY**





## GEAR CUBE

### Get in full gear!

The Gear Cube is a line break in puzzle-lover's world. This cube uses a full gear mechanism throughout its design, so that every full rotation takes twelve 90 degree turns. A brilliant design — you might not even want to solve it!

Age <b>7+</b>	Mastercartons <b>24 pieces</b> (inners of 6)	Barcode <b>8717278850320</b>
Player <b>1</b>	Suggested Price <b>549 Kč / 21,99 €</b>	Item code <b>#M5032</b>

## GET IN FULL GEAR!



## POLAR CUBE

### A puzzle with a difference

Make a few twists so the black and the white pattern is completely scrambled. Now try to return the original Polar Cube pattern on all six sides. We make you one promise, it is easier said than done!

Age <b>7+</b>	Mastercartons <b>24 pieces</b> (inners of 6)	Barcode <b>8717278851471</b>
Player <b>1</b>	Suggested Price <b>599 Kč / 23,99 €</b>	Item code <b>#M5147</b>





## SKEWB ULTIMATE

### The ultimate challenge

The 12 different colored sides of Skewb Ultimate offer a true challenge for the expert puzzler. You thought you had mastered the cube... now, try the ultimate test: Skewb!

Age <b>7+</b>	Mastercartons <b>24 pieces</b> (inners of 6)	Barcode <b>8717278850344</b>
Player <b>1</b>	Suggested Price <b>459 Kč / 18,99 €</b>	Item code <b>#M5034</b>



*X-treme fun!*



## SKEWB XTREME

### X-treme puzzle fun!

Skewb Xtreme pushes puzzles to the limit! The first challenge is solving the puzzle so that each side shows one of ten solid colors — tough for sure, but not impossible (we promise). The second challenge, of course, is whether or not to 'solve' it at all: symmetrical from nearly any angle, the X-treme is so beautiful, you may just want to show it off!

Age <b>7+</b>	Mastercartons <b>24 pieces</b> (inners of 6)	Barcode <b>8717278850382</b>
Player <b>1</b>	Suggested Price <b>459 Kč / 18,99 €</b>	Item code <b>#M5038</b>





## MORPH'S EGG

### Can you get it back to the egg shape?

Don't crack under the stress! These components twist and spin on every axis, and the egg will quickly fall apart. If you want scrambled eggs for breakfast this is the perfect puzzle.

Age <b>7+</b>	Mastercartons <b>24 pieces</b> (inners of 6)	Barcode <b>8717278850412</b>
Player <b>1</b>	Suggested Price <b>459 Kč / 18,99 €</b>	Item code <b>#M5041</b>



## XXL GEAR CUBE

### You'll have your hands full!

With its constantly shifting gear mechanism, Gear Cube XXL is the newest concept in puzzle design. Twist and turn the cube to mix it up, then solve by returning all six sides to solid colors. But this isn't your average cube... one full rotation requires twelve 90 degree turns. A unique puzzle — and literally TWO handfuls to solve!

Age <b>7+</b>	Mastercartons <b>24 pieces</b> (inners of 6)	Barcode <b>8717278850580</b>
Player <b>1</b>	Suggested Price <b>899 Kč / 35,99 €</b>	Item code <b>#M5058</b>



## HOLLOW SERIES

The Hollow Series presents an intriguing, innovative advance in twisty puzzles.

The 'no-core puzzles' movements are unlike anything experienced by even the most experienced puzzle-solver. With a combination of inventive gameplay and stunning design, Meffert Hollow series are one part gift, one part puzzle, one part treasure!

Age <b>14+</b>	Mastercartons <b>24 pieces</b> (inners of 6)
Player <b>1</b>	Suggested Price <b>499 Kč / 19,99 €</b>

Hollow Cube Item code <b>#M5079</b>	Barcode <b>8717278850795</b>
---	---------------------------------

Hollow Pyraminx Item code <b>#M5097</b>	Barcode <b>8717278850979</b>
---	---------------------------------

Hollow Skewb Ultimate Item code <b>#M5096</b>	Barcode <b>8717278850962</b>
---	---------------------------------

Hollow Skewb Cube Item code <b>#M5098</b>	Barcode <b>8717278850986</b>
---	---------------------------------

Hollow Two By Two Item code <b>#M5095</b>	Barcode <b>8717278850955</b>
---	---------------------------------

**Hollow Pyraminx**



**Hollow Two by Two**



**Hollow Cube**



**Hollow Skewb Cube**



**Hollow Skewb Ultimate**







## POCKET CUBE

### A cube within a cube within a...

At first glance, the pocket cube looks like a simple 2x2 cube. But with the axis off-center and moving cubes of two different sizes, there is nothing simple about this cube! Can you master the crazy shapes and return the pocket cube back to its original shape?

Age <b>7+</b>	Mastercartons <b>24 pieces</b> (inners of 6)	Barcode <b>8717278850597</b>
Player <b>1</b>	Suggested Price <b>459 Kč / 18,99 €</b>	Item code <b>#M5059</b>

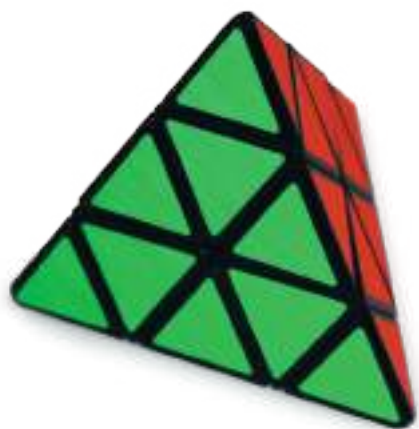


## MEGAMINX

### Are you ready for the greatest challenge of all?

With 50 movable pieces (compared to 20 in a standard cube puzzle), the Megaminx is sure to be a star in any puzzler's collection. Twist and turn each of the dodecahedron-shaped Megaminx's 12 sides until each side has the same color. The faces spin just like the classic cube... but beware: the Megaminx is a MEGA challenge!

Age <b>7+</b>	Mastercartons <b>24 pieces</b> (inners of 6)	Barcode <b>8717278850535</b>
Player <b>1</b>	Suggested Price <b>599 Kč / 24,99 €</b>	Item code <b>#M5053</b>



## PYRAMINX

### The one that started it all

The Pyraminx was created by scientist and inventor Uwe Meffert 52 years ago. One of the very first twisty puzzles, if not the first, and now the Pyraminx and Uwe are world famous! It's hard to beat a classic...the original Pyraminx.

Age <b>7+</b>	Mastercartons <b>24 pieces</b> (inners of 6)	Barcode <b>8717278850351</b>
Player <b>1</b>	Suggested Price <b>459 Kč / 18,99 €</b>	Item code <b>#M5035</b>

**THE ONE  
THAT  
STARTED IT  
ALL!**



LIMITED EDITION



## PYRAMINX CRYSTAL

The original king of twisty puzzles, now in crystal!

Looking good at 52! Together with Professor Uwe Meffert, the inventor of the Pyraminx, we celebrate the Pyraminx's golden anniversary with our transparent crystal rendition of the original classic puzzle.

Age <b>14+</b>	Mastercartons <b>24 pieces</b> (inners of 6)	Barcode <b>8717278851931</b>
Player <b>1</b>	Suggested Price <b>599 Kč / 23,99 €</b>	Item code <b>#M5093</b>



## PYRAMINX DIAMOND

So you mastered the Pyraminx Duo... but what about the Pyraminx Diamond?

Just like the Duo, simply twist each tip and the adjacent centre follow...but nothing is truly simple when there are not just four sides to match, but eight — it's double trouble!

Age <b>7+</b>	Mastercartons <b>24 pieces</b> (inners of 6)	Barcode <b>8717278851105</b>
Player <b>1</b>	Suggested Price <b>549 Kč / 21,99 €</b>	Item code <b>#M5110</b>



## PYRAMINX EDGE

**Twist & turn to scramble the colours. Then try to make one solid colour per face.**

With its cutting-edge design, Pyraminx Edge dwells in the top ranks of twisty puzzles. This new edition will test your patience just the right amount: enough to tease your puzzle brain and still keep your attention. The ingenious design is oriented around the edges; only the edges can move!

Age <b>7+</b>	Mastercartons <b>24 pieces</b> (inners of 6)	Barcode <b>8717278851495</b>
Player <b>1</b>	Suggested Price <b>499 Kč / 19,99 €</b>	Item code <b>#M5149</b>



## PYRAMINX MARBLE

**Build a pyramid of marbles!**

Forget blocks, marbles are the way to build a pyramid! The Pyraminx Marble's sophisticated spin-and-click mechanism makes this a joy to play with as you try to get 10 different colors on each of the four sides.

Age <b>7+</b>	Mastercartons <b>24 pieces</b> (inners of 6)	Barcode <b>8717278851693</b>
Player <b>1</b>	Suggested Price <b>599 Kč / 23,99 €</b>	Item code <b>#M5169</b>





## ***FELIKS 9***

### **Can you catch the rainbow?**

A new challenge worthy of the avid puzzler's interest. Instead of solving a color for six sides, arrange the curved rainbow-colored pieces so that each of six sides contain all nine colors! The rows turn smoothly in your hands, and the pieces flow seamlessly from one to the next. Not as smooth or seamless is the path to a solution, though!

Age <b>7+</b>	Mastercartons <b>24 pieces</b> (innern of 6)	Barcode <b>8717278850511</b>
Player <b>1</b>	Suggested Price <b>499 Kč / 19,99 €</b>	Item code <b>#M5051</b>

**CAN YOU  
CATCH  
THE RAINBOW?**





## GHOST CUBE

### A shape-shifting master test of skill

There's more than meets the eye with this puzzle. At first glance, it's a normal six-sided cube, but within a few twists it will have more angles and unusual shapes-upon-shapes than you'll know what do with — let alone solve! Do you think you stand a ghost of a chance?

Age <b>7+</b>	Mastercartons <b>24 pieces</b> (inners of 6)	Barcode <b>8717278850450</b>
Player <b>1</b>	Suggested Price <b>599 Kč / 23,99 €</b>	Item code <b>#M5045</b>



## GHOST XTREME

### For serious puzzlers only!

With double the sides of the original Ghost Cube, the twelve-sided Ghost Xtreme is a morphing puzzle that will challenge you unlike ever before. Without varied colours or standard-shaped pieces, the only guide you have is your own skill. Next-level puzzling at its best!

Age <b>7+</b>	Mastercartons <b>24 pieces</b> (inners of 6)	Barcode <b>8717278851099</b>
Player <b>1</b>	Suggested Price <b>599 Kč / 23,99 €</b>	Item code <b>#M5109</b>



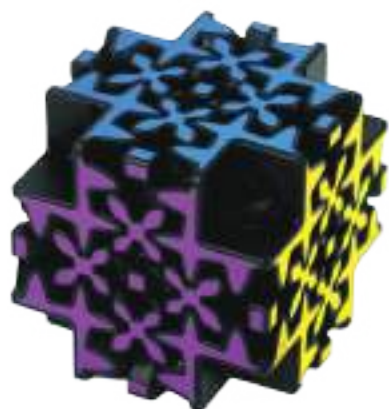
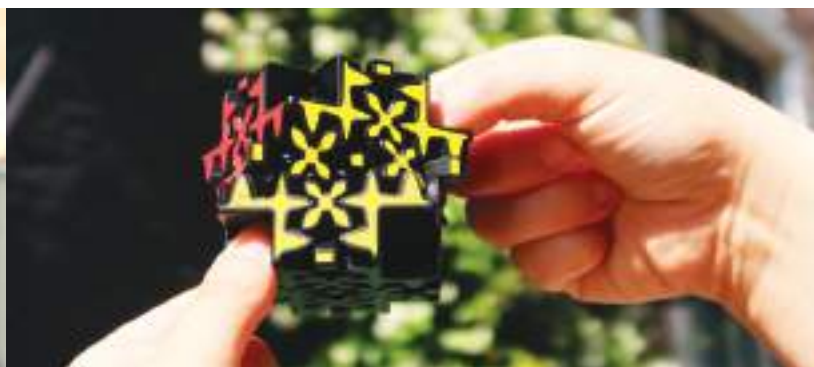


## MOLECUBE

### Is puzzling in your DNA?

Once you get your hands on the Molecube, you'll never want to put it down. We crafted a smooth spinning device that glides with your wrists, and whose spherical pieces really give you the feeling of ultimate dexterity! Then there's the puzzle itself. Can you get all 9 colors on each side? Careful: only a puzzler who understands cubes at the atomic level stands a chance!

Age <b>7+</b>	Mastercartons <b>24 pieces</b> (inners of 6)	Barcode <b>8717278850443</b>
Player <b>1</b>	Suggested Price <b>459 Kč / 18,99 €</b>	Item code <b>#M5044</b>



## MALTESE GEAR

### Mesmerizing Movements

Of all gear puzzles, Maltese Gear may be the most inspiring. Its mesmerizing movements designed around a hollow interior make for magical puzzle-solving.

Age <b>7+</b>	Mastercartons <b>24 pieces</b> (inners of 6)	Barcode <b>8717278851501</b>
Player <b>1</b>	Suggested Price <b>599 Kč / 23,99 €</b>	Item code <b>#M5150</b>

## MINI MEFFERT'S

### Mini's with maximum effect

Building on the enormous global success of Meffert's Puzzles, we are excited to release 4 unique Mini Meffert's Keychains:

- Mini Skewb
- Mini Feliks Pillow
- Mini Molecube
- Mini Diver's Helmet

Each Mini rotates with the same smoothness as their big brothers and sisters, and they are beautifully packaged in fully transparent blisters.



Age <b>9+</b>	Display of 20 pieces, 5 pieces each • Individually available in master cartons of 48 (inner of 12)
------------------	--

Player <b>1</b>	Suggested Price <b>269 Kč / 9,99 €</b>
--------------------	---

Mini Felix Pillow	
Item code <b>#M5078</b>	Barcode <b>8717278850788</b>

Mini Skewb	
Item code <b>#M5048</b>	Barcode <b>8717278850481</b>

Mini Molecube	
Item code <b>#M5047</b>	Barcode <b>8717278850474</b>

Mini Diver's Helmet	
Item code <b>#M5077</b>	Barcode <b>8717278850771</b>

## MEFFERT'S FLOOR DISPLAY

### All Meffert's products in one place!

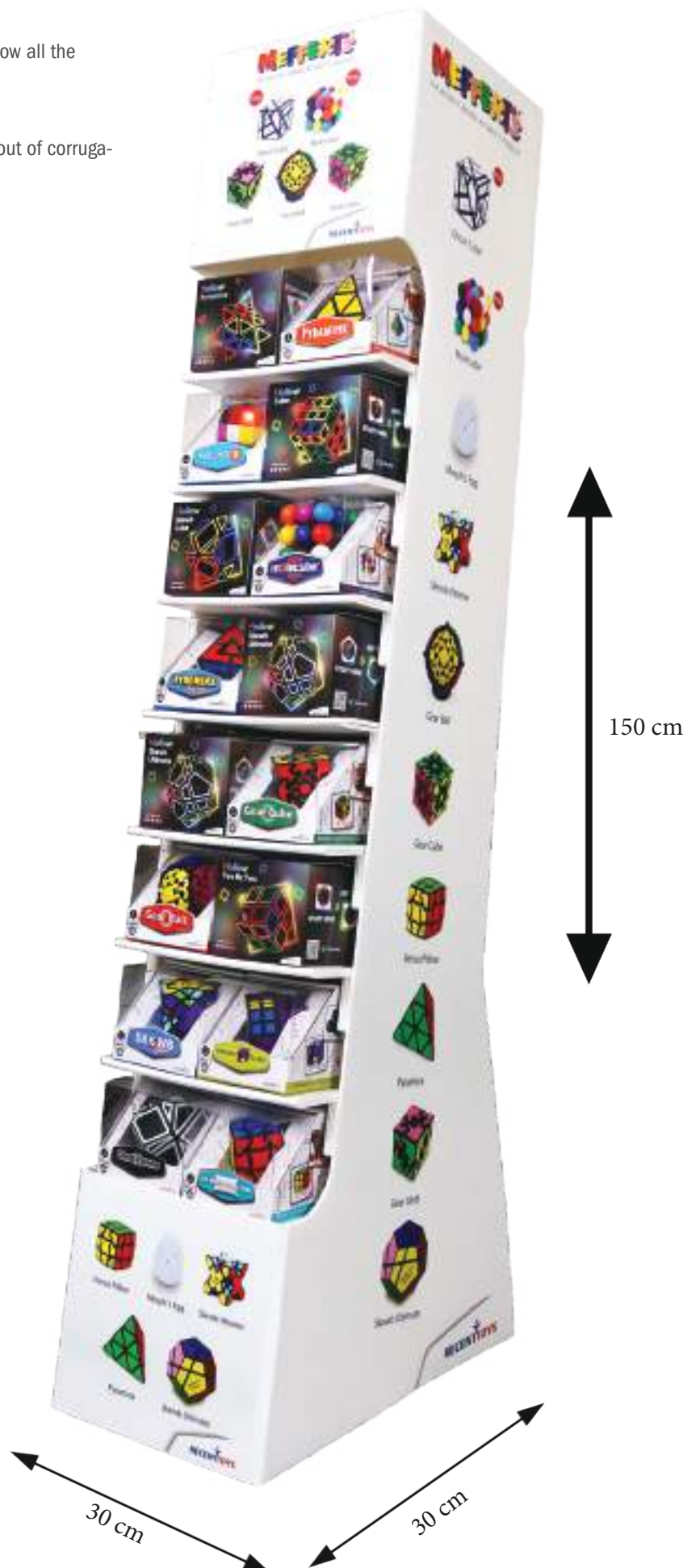
Want to have an eye-catching display in-store to show all the incredible Meffert's puzzles?

Please find the solution - a wonderful FSDU made out of corrugated plastic. It holds 32 items and is 100% durable.

Interested in stocking our items?

E-mail us at:  
[info@recenttoys.com](mailto:info@recenttoys.com)

Specifications	Material
<b>Fits 32 pieces</b>	<b>Currogated plastic</b>
Item code	*Display only
<b>#MDIS01</b>	





# Constantin Collection

Jean Claude Constantin is one of the most prolific puzzle inventors of our generation. His creative and diverse creations are acclaimed for beautiful designs and challenging solutions. For many years, Recent Toys has been the exclusive distributor for his worldwide audience. We have a selection of some of his best puzzles in fine metal and hardwood.

## FLOWER MAZE

### Flower power

Can you buzz along the flower's petals, turn and flip the puzzle to move the ball of 'pollen' between two layers and finally extract the pollen? If you can solve it, success will smell sweet, indeed!

Age <b>14+</b>	Mastercartons <b>24 pieces</b> (inners of 6)	Barcode <b>8717278850634</b>
Player <b>1</b>	Suggested Price <b>549 Kč / 21,99 €</b>	Item code <b>#C5063</b>



*A maze or  
a puzzle?  
Why not both?*

## DOUBLE TROUBLE

### A maze? A puzzle? Why not both!

With Two mazes, two balls, everything connected by giant gears. On their own, each maze is manageable. Can you find the way to remove both balls from the mazes simultaneously, though? Careful! The gears move at the same time, so a step towards the exit on one side may be a step backwards on the other.



Age <b>14+</b>	Mastercartons <b>24 pieces</b> (inners of 6)	Barcode <b>8717278850641</b>
Player <b>1</b>	Suggested Price <b>549 Kč / 21,99 €</b>	Item code <b>#C5064</b>





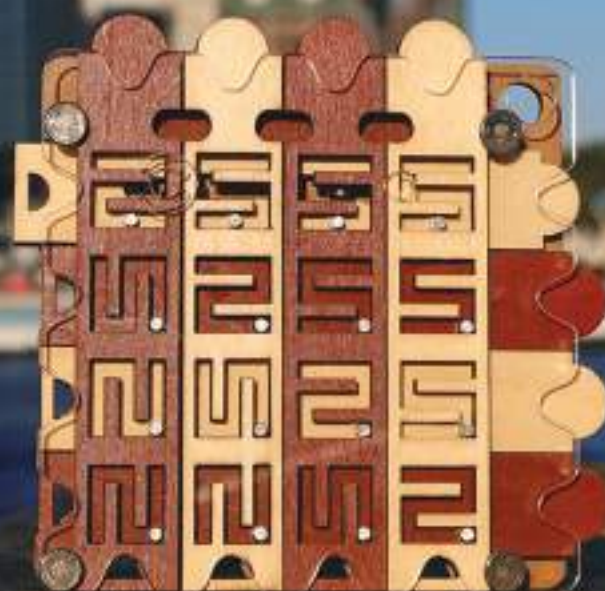
## HIDDEN CORRIDOR

### There's got to be a way out!

Move the horizontal and vertical sliders to open the hidden corridor, allowing you to release your ball from the puzzle. Can you find the exit, or will the corridor remain hidden forever?

Age <b>14+</b>	Mastercartons <b>24 pieces</b> (inners of 6)	Barcode <b>8717278850627</b>
Player <b>1</b>	Suggested Price <b>549 Kč / 21,99 €</b>	Item code <b>#C5062</b>

**THERE'S  
GOT BE  
A WAY OUT!**



## TOUGH MEASURES

### The ruler of all puzzles

With Two mazes, two balls, everything connected by giant gears. On their own, each maze is manageable. Can you find the way to remove both balls from the mazes simultaneously, though? Careful! The gears move at the same time, so a step towards the exit on one side may be a step backwards on the other.

Age <b>14+</b>	Mastercartons <b>24 pieces</b> (inners of 6)	Barcode <b>8717278850603</b>
Player <b>1</b>	Suggested Price <b>549 Kč / 21,99 €</b>	Item code <b>#C5060</b>





## THE WAITER'S TRAY

**This waiter is ready for a break—but first he must remove all the bottles from his tray**

Can you help move the bottles up and down to gradually slide them all out of the tray? Think twice: some bottles need to be moved more than once, and some are locked until you move the balls holding them in place. Upon completion, why not try putting the bottles all back?

Age <b>14+</b>	Mastercartons <b>24 pieces</b> (inners of 6)	Barcode <b>8717278850610</b>
Player <b>1</b>	Suggested Price <b>549 Kč / 21,99 €</b>	Item code <b>#C5061</b>

**CAN YOU  
HELP  
THE WAITER?**



## STAR PATH

**Navigate the galaxy**

The Star Path is the newest creation of Jean Claude Constantin. This wonderful maze puzzle consists out of 3 different layers that all move separately. The ball needs to be extracted and has to move through the whole universe. Can you navigate the galaxy and find the path to extract the ball?



Age <b>14+</b>	Mastercartons <b>24 pieces</b> (inners of 6)	Barcode <b>8717278851266</b>
Player <b>1</b>	Suggested Price <b>549 Kč / 21,99 €</b>	Item code <b>#C5126</b>

**SOLD  
OUT**

## SHIP IN A BOTTLE

**Deduction and dexterity. Can you assemble all the pieces in the bottle to create the ship?**

Gently shake all the pieces out of the bottle. Use your powers of deduction and a gentle touch to reassemble all the pieces inside the bottle, creating the finished image. Will it be plain sailing or will you get sea sick?

Age <b>14+</b>	Mastercartons <b>24 pieces</b> (inners of 6)	Barcode <b>8717278850993</b>
Player <b>1</b>	Suggested Price <b>549 Kč / 21,99 €</b>	Item code <b>#C5099</b>

*Deduction  
and  
dexterity*



## C'EST LA VIE

**Can you remove the metal ring from the wooden maze? More challenging than you might think, but such is life!**

Age <b>14+</b>	Mastercartons <b>24 pieces</b> (inners of 6)	Barcode <b>8717278850948</b>
Player <b>1</b>	Suggested Price <b>369 Kč / 14,99 €</b>	Item code <b>#C5094</b>



## CONSTANTIN PUZZLE BOXES

**For centuries, puzzle boxes have been used to pass secret messages and small precious items**

These puzzle boxes contain such a hidden compartment, can you find out how to open it? Three original Constantin Puzzle boxes in three different difficulty levels!

Age <b>14+</b>	Mastercartons <b>24 pieces</b> (inners of 6)
Player <b>1</b>	Suggested Price <b>499 Kč / 19,99 €</b>
Puzzle Box #1	
Item code <b>#C5100</b>	Barcode <b>8717278851006</b>
Puzzle Box #2	
Item code <b>#C5101</b>	Barcode <b>8717278851013</b>
Mini Molecube	
Item code <b>#M5102</b>	Barcode <b>8717278851020</b>





## CONSTANTIN METAL OBJECTS

### Metal Bike

One, two, three...let's ride! But safety first, of course — can you remove the lock from your bicycle?



### Metal Telephone

This puzzle is calling your name! The handset can be detached from the base — can you solve how? Seems simple, but after a few minutes you may want to phone a friend for help!

### Metal Light Bulb

This bulb needs changing, but first it must be removed from the plug and cable. It'll take some very bright ideas to solve this puzzle!

Age <b>14+</b>	Mastercartons <b>24 pieces</b> <b>(inners of 6)</b>
Player <b>1</b>	Suggested Price <b>349 Kč / 13,99 €</b>
Metal Bike Item code <b>#C5084</b>	Barcode <b>8717278850849</b>
Puzzle Box #2 Item code <b>#C5085</b>	Barcode <b>8717278850856</b>
Mini Molecube Item code <b>#M5086</b>	Barcode <b>8717278850863</b>

## CONSTANTIN TABLE DISPLAY

### Grow your sales with the new wooden table display

Finally, the gorgeous Constantin puzzles have a display! This beautiful table display fits between 24 and 36 Constantin puzzles, dependent on the chosen variety of puzzles.

Eye catching & delicate.



Specifications Fits between 24-36 pieces	The display comes flat with a clear assembly instruction
Item code #CDIS01	*Display only

Interested in stocking  
our items?

E-mail us at:  
[info@recenttoys.com](mailto:info@recenttoys.com)



**Any questions?**

**Reach out to us at  
[info@recenttoys.com](mailto:info@recenttoys.com)**

# 2023

Recent Toys International, founded in 2001, is dedicated crafting 'intelligent' brainteasers hands-on puzzles that challenge the brightest minds and inspire players of all ages. Our products are simple, smart, one-of-a-kind and made to last, providing endless hours of mental stimulation whether you are a beginner or Master Puzzler.

Recent Toys International strives for quality, durability, and affordability, for sellers as well as consumers.



RECENT TOYS COLLECTION



RECENT GIFTWARE



CONSTANTIN COLLECTION



MEFFERT'S COLLECTION

**SmartLife s.r.o.**  
Matzenauerova 2222/4  
616 00 Brno  
Czech Republic

Petr Janík  
+420 602 504 053  
[petr.janik@smartlife.cz](mailto:petr.janik@smartlife.cz)

